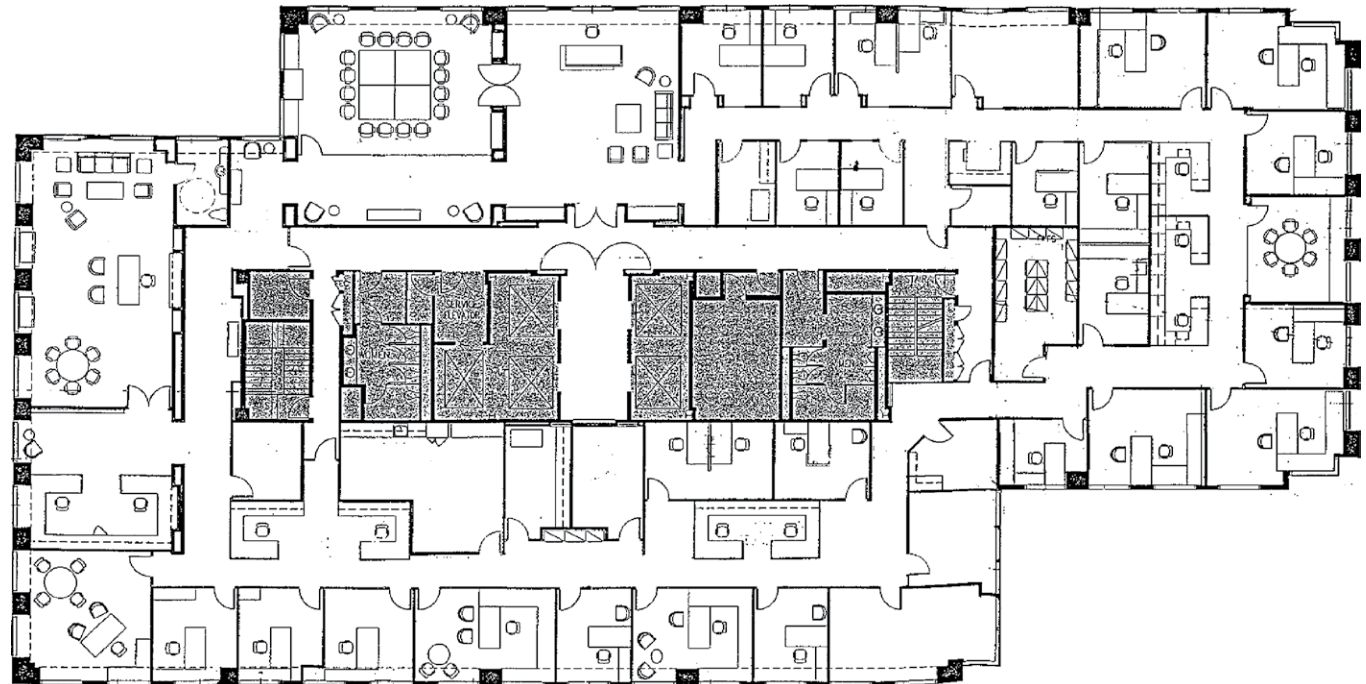


## SUITE 1800

SUITE SF  
16,894 RSF



FOR MORE INFORMATION PLEASE CONTACT

**ANTHONY GATTI**  
Senior Vice President  
Lic. 01002310  
+ 1 310 550 2557  
anthony.gatti@cbre.com

**SEP MELAMED**  
President  
Lic. 01219182  
+ 1 310 722 1750  
sep@primepropertiesre.com

**CBRE, INC.**  
1840 Century Park East,  
Suite 900  
Los Angeles, CA  
90067-2108

[www.centerwest.com](http://www.centerwest.com)

© 2017 CBRE, Inc. The information contained in this document has been obtained from sources believed reliable. While CBRE, Inc. does not doubt its accuracy, CBRE, Inc. has not verified it and makes no guarantee, warranty or representation about it. It is your responsibility to independently confirm its accuracy and completeness. Any projections, opinions, assumptions or estimates used are for example only and do not represent the current or future performance of the property. The value of this transaction to you depends on tax and other factors which should be evaluated by your tax, financial and legal advisors. You and your advisors should conduct a careful, independent investigation of the property to determine to your satisfaction the suitability of the property for your needs. CBRE and the CBRE logo are service marks of CBRE, Inc. and/or its affiliated or related companies in the United States and other countries. All other marks displayed on this document are the property of their respective owners. Photos herein are the property of their respective owners and use of these images without the express written consent of the owner is prohibited.

**CBRE**

**PRIME**  
PROPERTIES  
real estate services

