

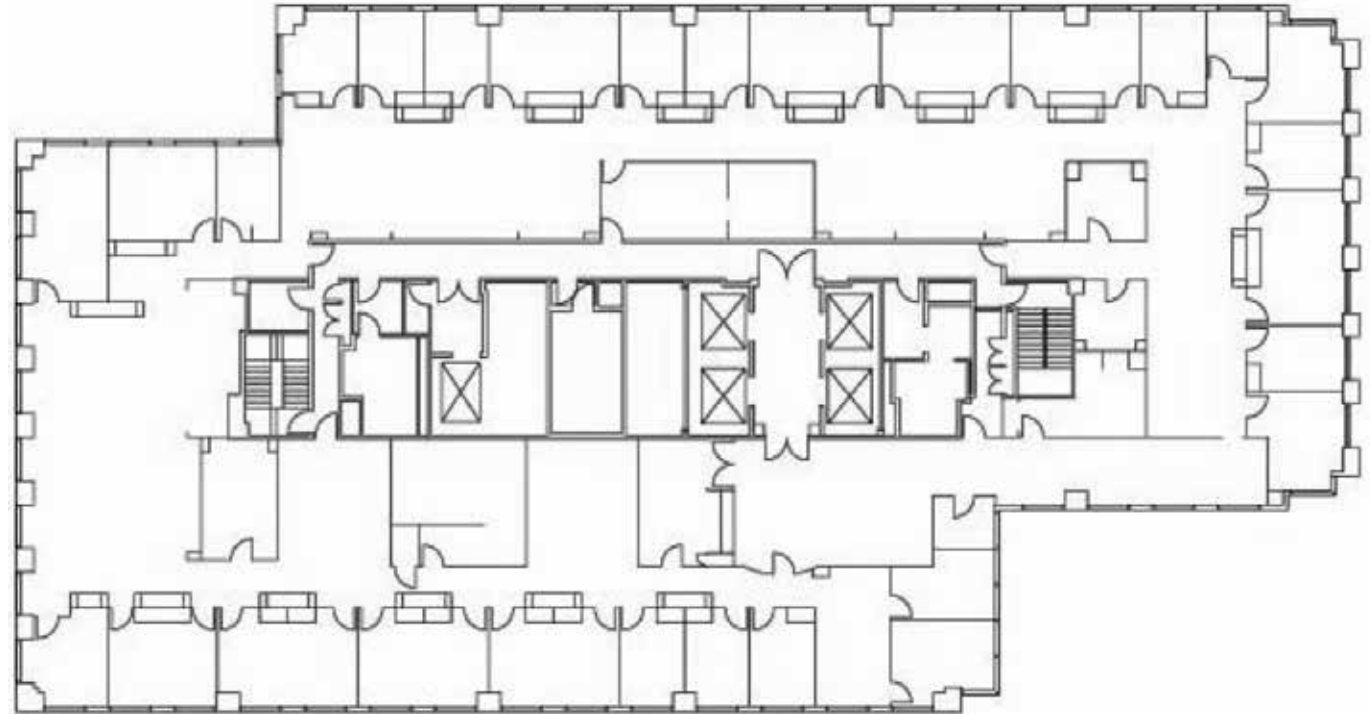
## SUITE 500

SUITE SF  
16,843 RSF

CONTIGUOUS  
Suite 400 17,468 RSF

### SPACE FEATURES

- Partially Built Out
- 11 exterior offices



FOR MORE INFORMATION PLEASE CONTACT

**ANTHONY GATTI**  
Vice Chairman  
Lic. 01002310  
+ 1 310 550 2557  
anthony.gatti@cbre.com

**SEP MELAMED**  
President  
Lic. 01219182  
+ 1 310 722 1750  
sep@primepropertiesre.com

[www.centerwest.com](http://www.centerwest.com)

**CBRE**



© 2019 CBRE, Inc. All rights reserved. This information has been obtained from sources believed reliable, but has not been verified for accuracy or completeness. You should conduct a careful, independent investigation of the property and verify all information. Any reliance on this information is solely at your own risk. CBRE and the CBRE logo are service marks of CBRE, Inc. All other marks displayed on this document are the property of their respective owners, and the use of such logos does not imply any affiliation with or endorsement of CBRE. Photos herein are the property of their respective owners. Use of these images without the express written consent of the owner is prohibited.

